

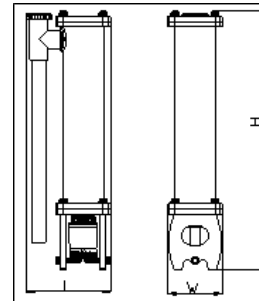
Instructions: Lifegard TURBO Reactor MEDIUM – Side Flow R800128

Media Capacity 450 ml – System Capacity 75 -150 Gallon – Quiet One 800 Pump 240 GPH

Please open the package carefully and check for damaged or lost parts. If the Seal is broken contact the store or seller and review the parts list on this instruction sheet to confirm no parts are missing.



Dimensions	R800128
L	6.30"
W	4.13"
H	15.43"
Pump Size	Quiet One Pro 800



Remove the Reactor from the box and review the parts breakdown line drawing to familiarize yourself to the reactor

If using Bio Pellet type beads: (Not Included)

NOTE: When using Bio Pellets you don't need the sponges (Top or Bottom)

This reactor can handle several different types of beads

1. Remove the 4 nylon screws from the top cover
2. Add recommended amount of media into the chamber
3. Close the top cover and make sure the O-ring is placed correctly in the slot and without any media or debris on or around it. Replace the nylon screws and "Hand Tighten Only".
4. Make sure the overflow pipe is snug fit properly
5. Familiarize yourself with the Flow Control Knob so you know how to control the flow high and low
6. Insert the outlet of the pump into the bottom of the base and slide the bottom support plate to hold the pump in place

If using GFO or other fine media: (Not Included)

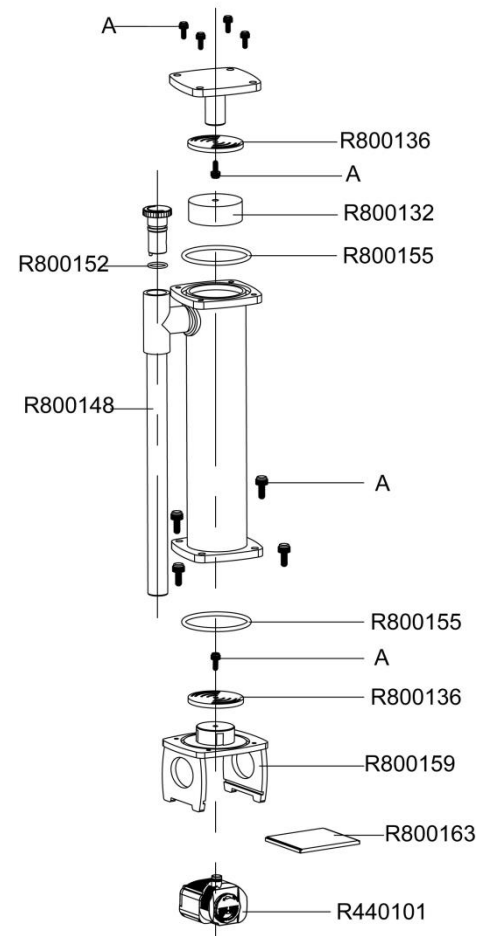
NOTE: You will need the two sponges supplied. Pack the media in-between the top and bottom sponge.

1. Add the bottom Sponge on Top of the bottom diffuser plate
2. Add the desired/recommended amount GFO / Carbon / other Media
3. Place the Top sponge Below the Top diffuser plate and attach the diffuser plate to the top cover as shown in the drawings

NOTE: Flow rate must be adjusted based on the amount and brand and amount of Bio Pellets used

- Bio Pellets typically take 4-6 weeks to begin working. As drastic changes are not desirable, it is recommended that you start with only 50% of the bio pellets then add 25% more bio pellets each week.
- Periodically when you notice an irregular flow pattern clean the reactor and plumbing with warm water
- Follow the Manufactures instruction for the recommendation of media you plan to use

R800128



Part No.	Description
R800132	Reactor Replacement White Sponges-Medium (set of 2)
R800136	Reactor Diffusor Plate-Medium (set of 2)
R800141	Reactor Nylon Screws-Medium Side Flow (set of 10 screws - A)
R800148	Reactor-Medium Side Flow Discharge Pipe
R800152	Reactor-Medium Side Flow Control O-Ring
R800155	Reactor-Medium Top Seal Plate O-Ring
R800159	Reactor-Medium Base Stand with Vortex Regulator
R800163	Reactor-Medium Base Pump Support Plate
R440101	Quiet One Pro Series Aquarium 800